



IMMIGRATION AND BORDER FACILITATION



Marc Rosenblum

Deputy Director, U.S. Immigration Policy

United States-Mexico Chamber of Commerce, Annual Meeting

May 13, 2015



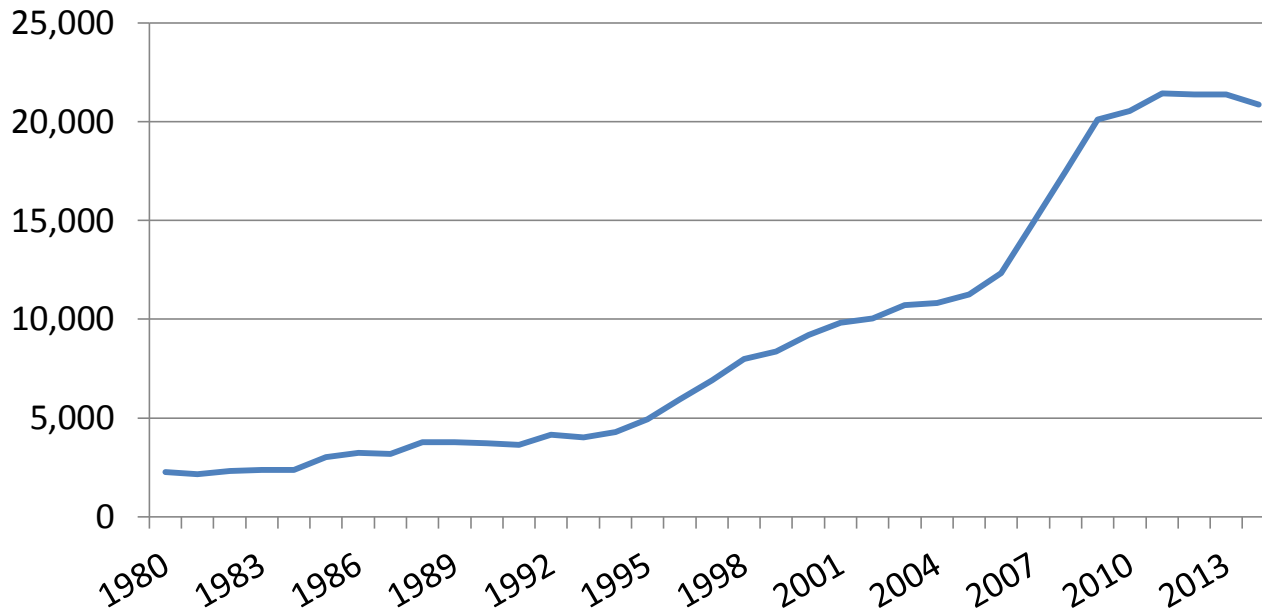
Enforcement Between POEs

- Enforcement mission
- Enforcement tools
- Enforcement policies
- Outcomes



Enforcement Between POEs: Tools

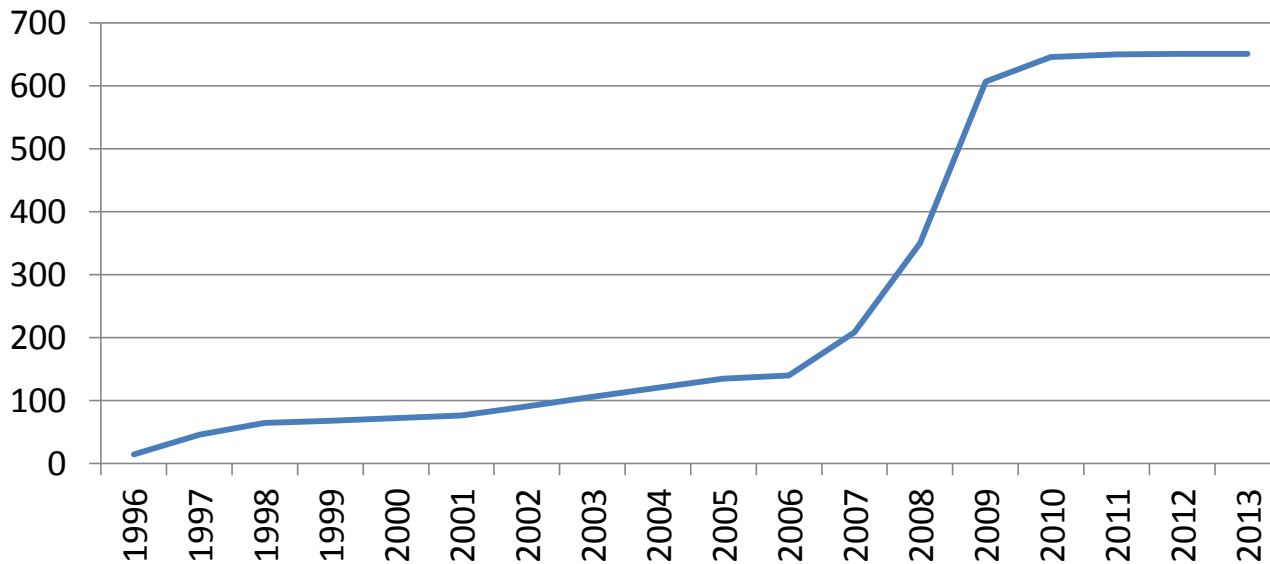
- Recent Trends: Enforcement Personnel





Enforcement Between POEs: Tools

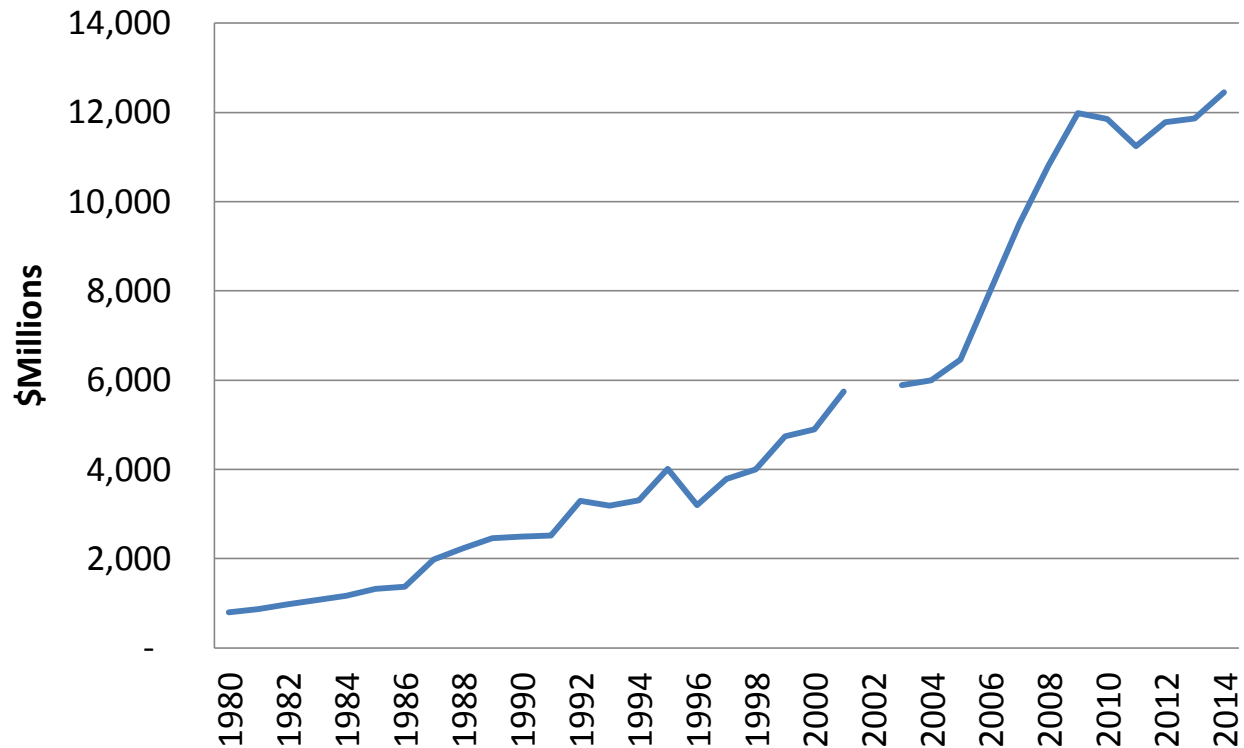
- Recent Trends: Fencing





Enforcement Between POEs: Tools

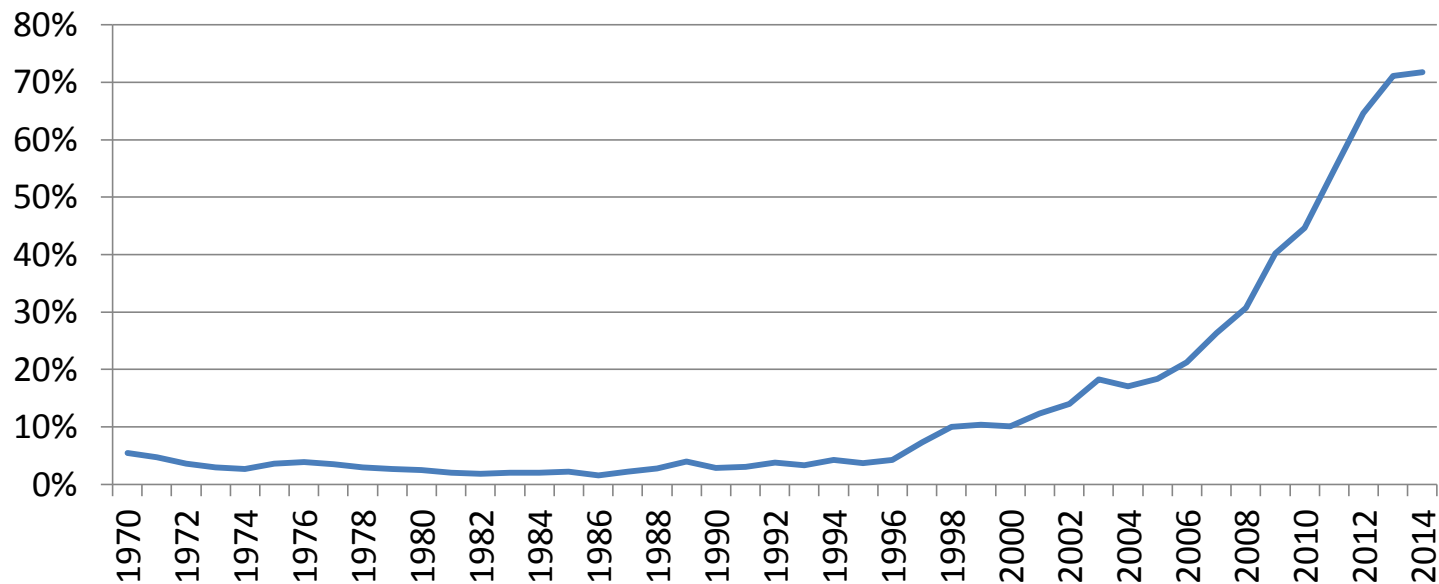
- Recent Trends: Border Enforcement Budget





Enforcement Between POEs: Policies

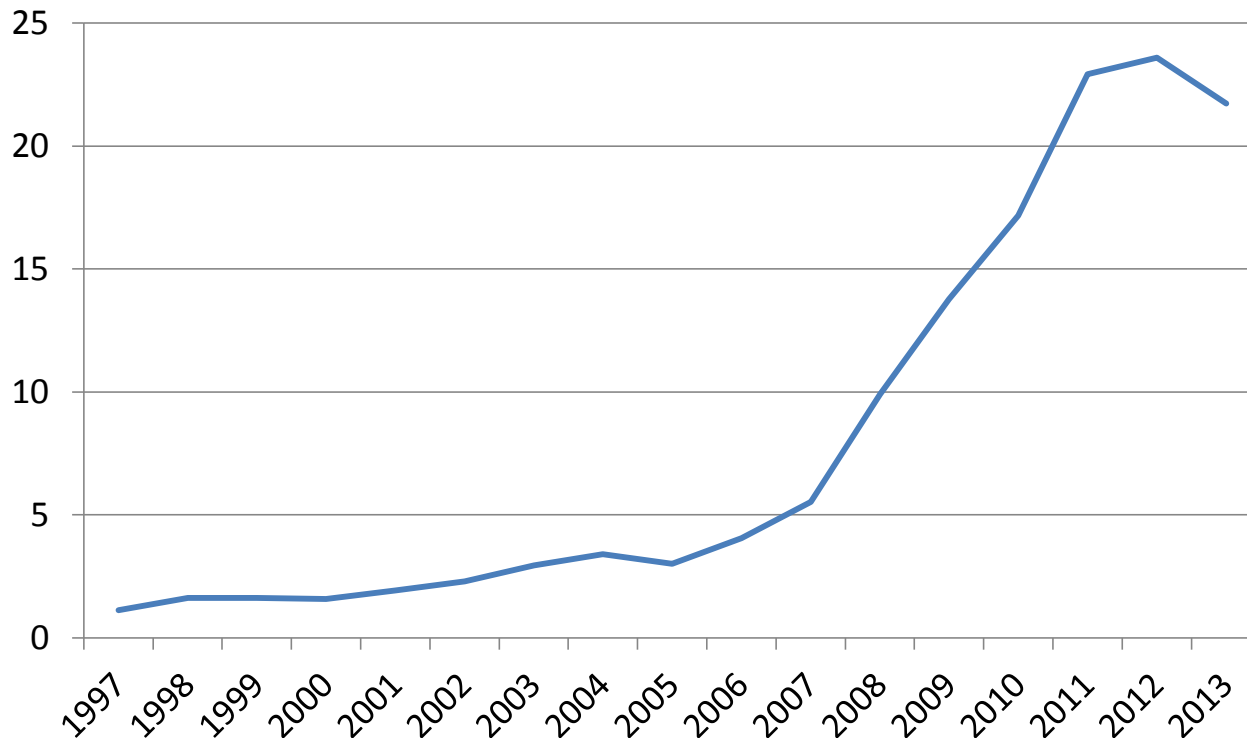
- Recent Trends: Formal Removals as Share of Deportations





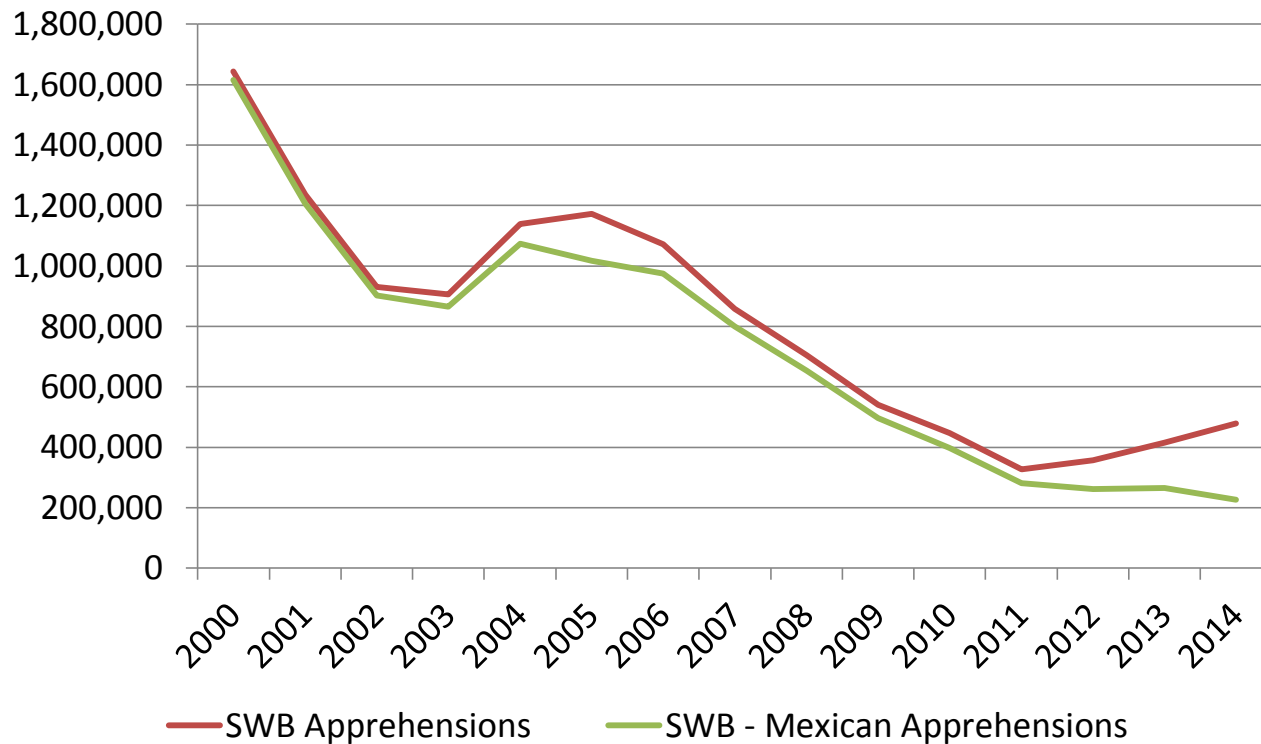
Enforcement Between POEs: Policies

- Recent Trends: Criminal Prosecutions as Share of Border Apprehensions



Enforcement Between POEs: Outcomes

- Recent Trends: Border Apprehensions--Overall and From Mexico



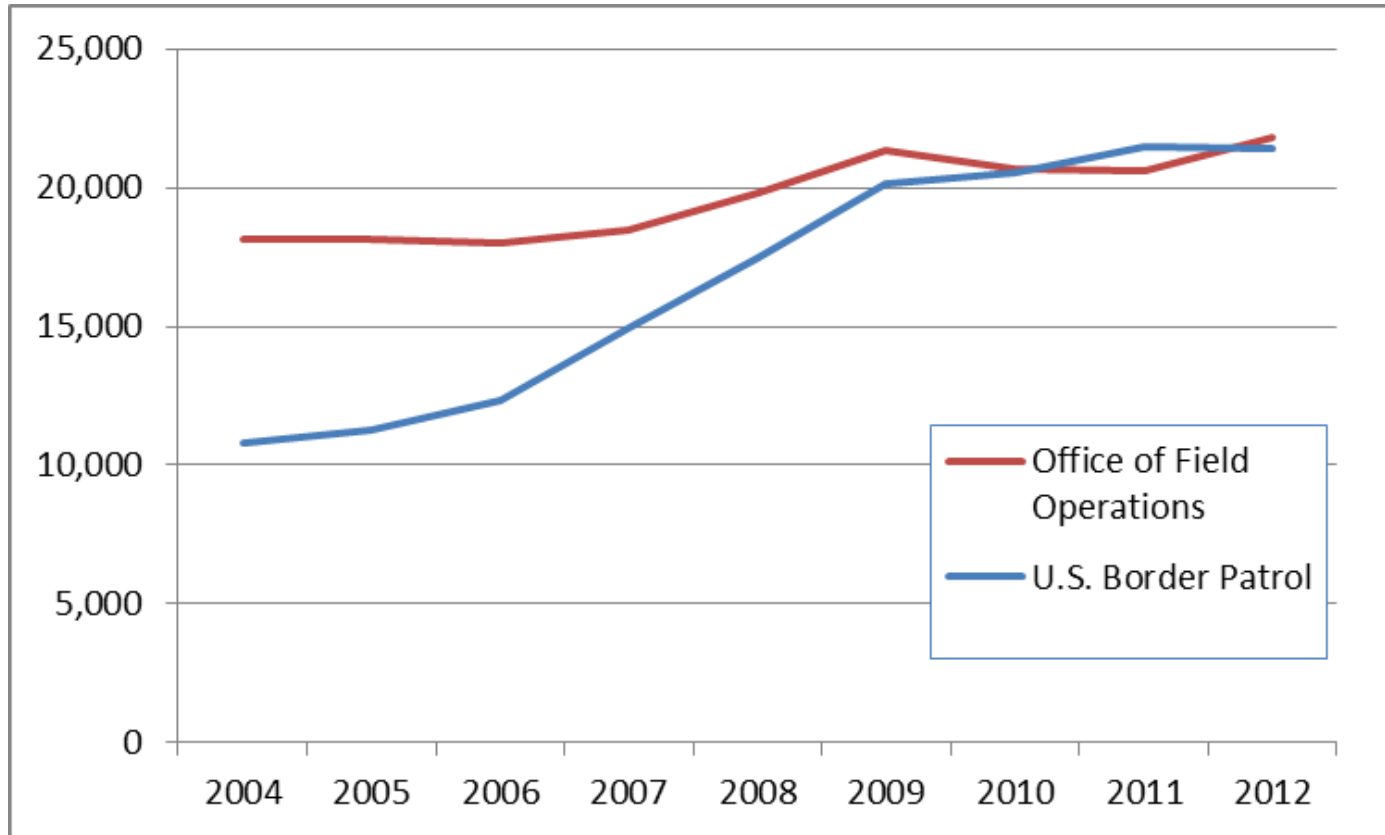


Enforcement at POEs

- Enforcement mission
- Enforcement tools
- Enforcement policies
- Outcomes

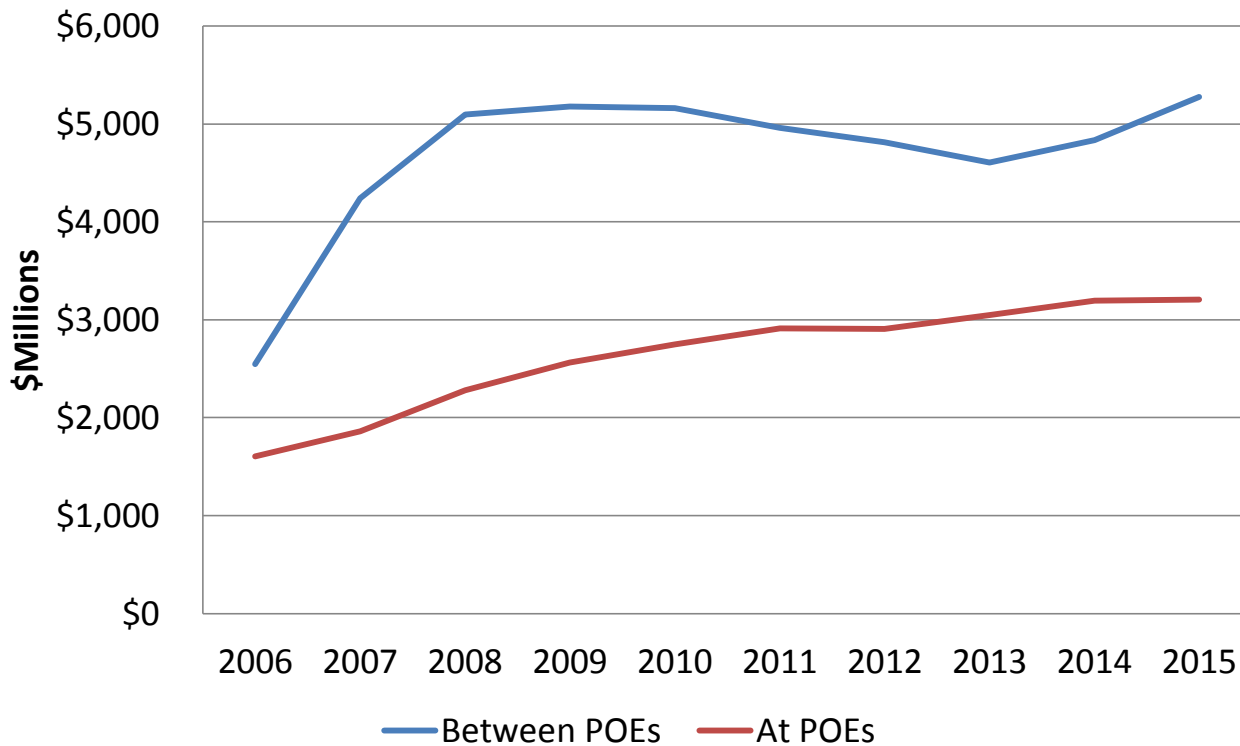
Enforcement at POEs: Tools

- Recent Trends: Spending at and between POEs



Enforcement at POEs: Tools

- Recent Trends: Spending at and between POEs





Enforcement at POEs: Policies

- Layered defenses
- Risk-based screening
- Cargo vs. Immigration
- Air, land, sea
- Mexico vs. Canada



Enforcement at POEs: Sea Cargo

- SAFE Port Act: 100% scanning requirement
- Advanced electronic cargo information
- Automated Targeting System
- Secure Freight Initiative and Container Security Initiative
- Radiation scanning at U.S. ports
- NII scanning + secondary inspection at U.S. ports



Enforcement at POEs: Air & Sea Passengers

- All travelers must apply for visa or visa waiver
- Visa Waiver travelers: on-line ESTA
- Visa travelers; in-person interview
 - CCD database
 - Visa Security Program
- Air travelers: PNR data 72 hours pre-travel; APIS data pre-departure
 - NTC No-board recommendations
 - Immigration Advisory Program
- Primary and Secondary inspection at POE

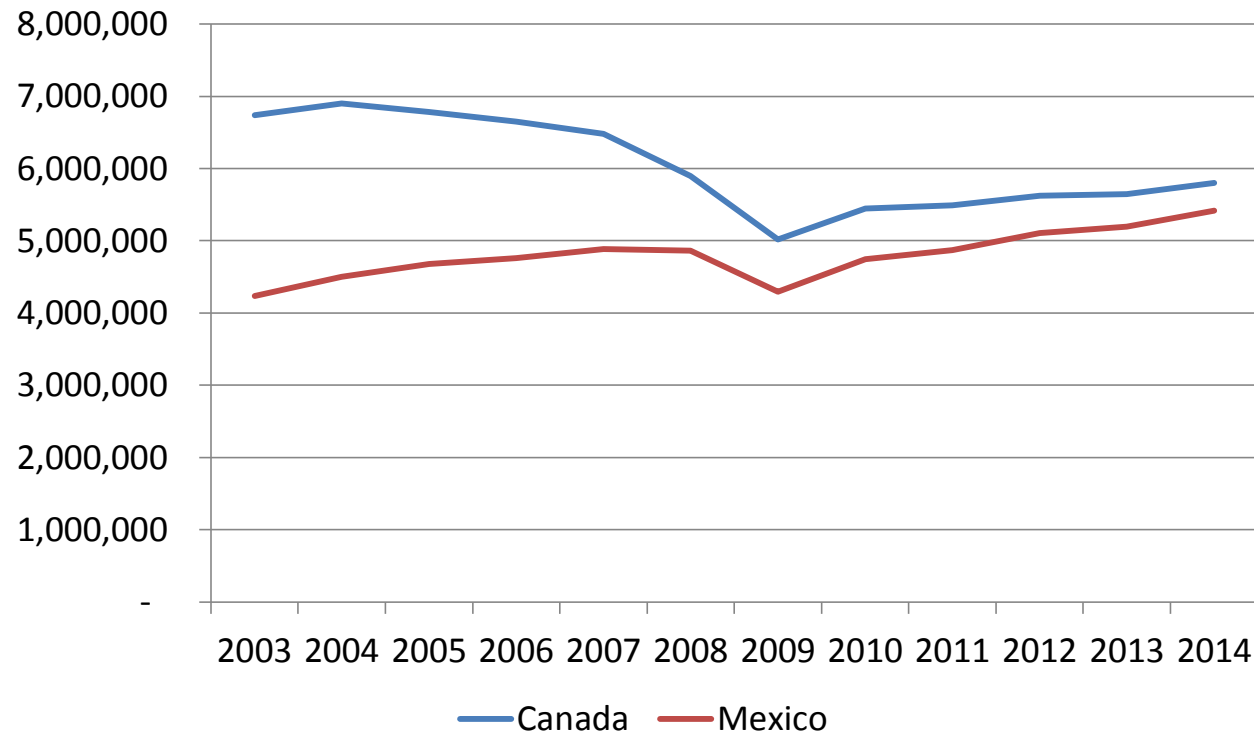


Challenges at U.S.-Mexico Border

- Limited physical infrastructure
- Non-uniform flows
 - Timing
 - Contents
- Scale of flows

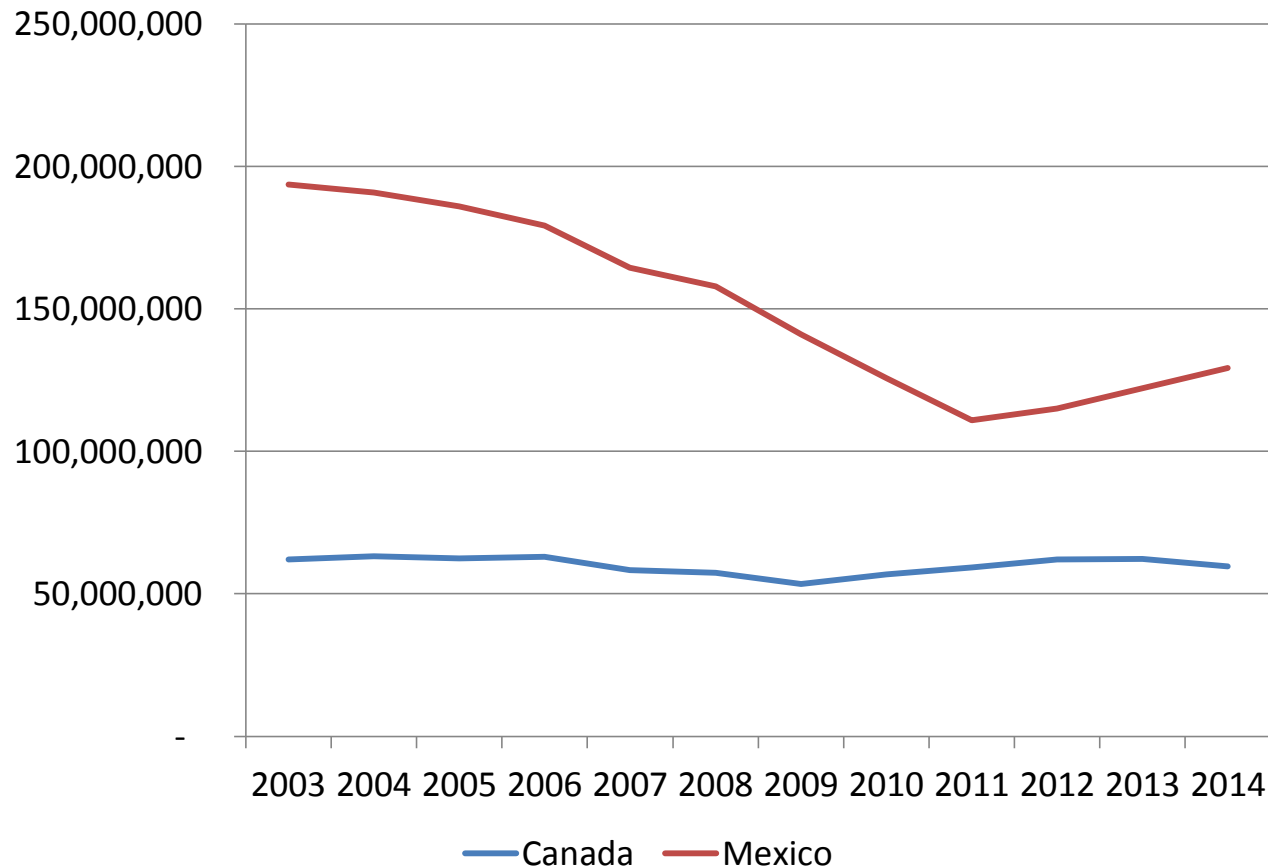
Challenges at U.S.-Mexico Border

- U.S.-Mexico and U.S.-Canada: Truck Flows



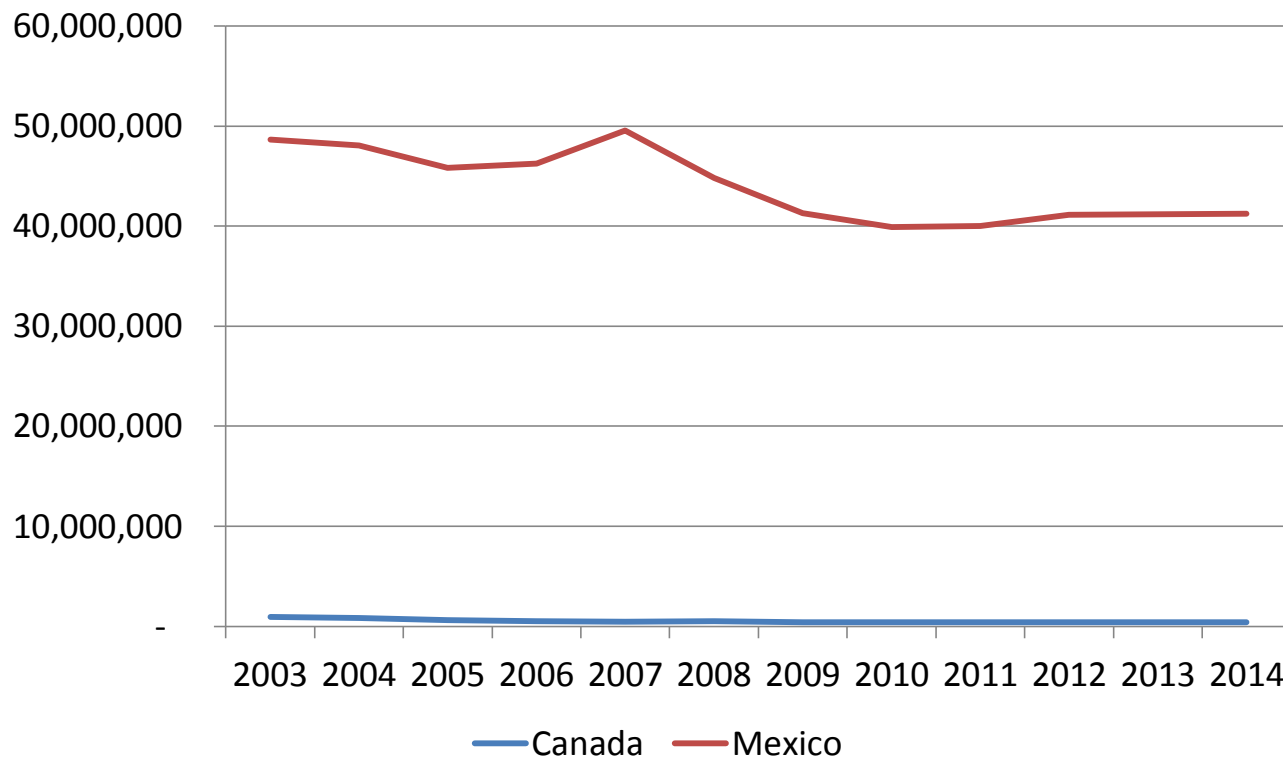
Challenges at U.S.-Mexico Border

- U.S.-Mexico and U.S.-Canada: Passenger Flows



Challenges at U.S.-Mexico Border

- U.S.-Mexico and U.S.-Canada: Pedestrian Flows





Policy Issues

- Between ports of entry
 - Declining returns on enforcement investment?
 - Targets for border security
 - Border metrics
- Policy issues
 - Trusted Trade/trusted travel programs
 - Advanced clearance
 - Entry-exit system
 - 21st Century Border (vs. Beyond the Border)



For more Information

Marc Rosenblum
mrosenblum@migrationpolicy.org

T: (202) 266-1919

F: (202) 266-1940

[**www.migrationpolicy.org**](http://www.migrationpolicy.org)